

FLOOR PLAN 1 GROUND FLOOR

SCALE: NTS
 ARCH REF: A/A1.5
 QUANTITY: TYPE A - 02,
 TYPE B - 07,
 TYPE C - 01.

GLASS WALL SYSTEM(S):
 KAWNEER IR-501T THERMAL IMPACT
 ALUMINUM STOREFRONT



DATE	DESCRIPTION
01/26/21	First Submittal
fp	BY
1	SUB

CONTRACTOR'S GLASS PRODUCTS
 7701 WEBER RD, CORPUS CHRISTI, TX 78315
 WORK (361) 854-8188 FAX (361) 854-4412

PROJECT: WOODSBORO FIRE STATION
RENOVATION
 ARCHITECT: LNV ENGINEERS, ARCHITECTS, SURVEYORS
 (261) 983-1884
 PROJECT: COSTA VERDE RESOURCES, LLC
 (863) 883-5800

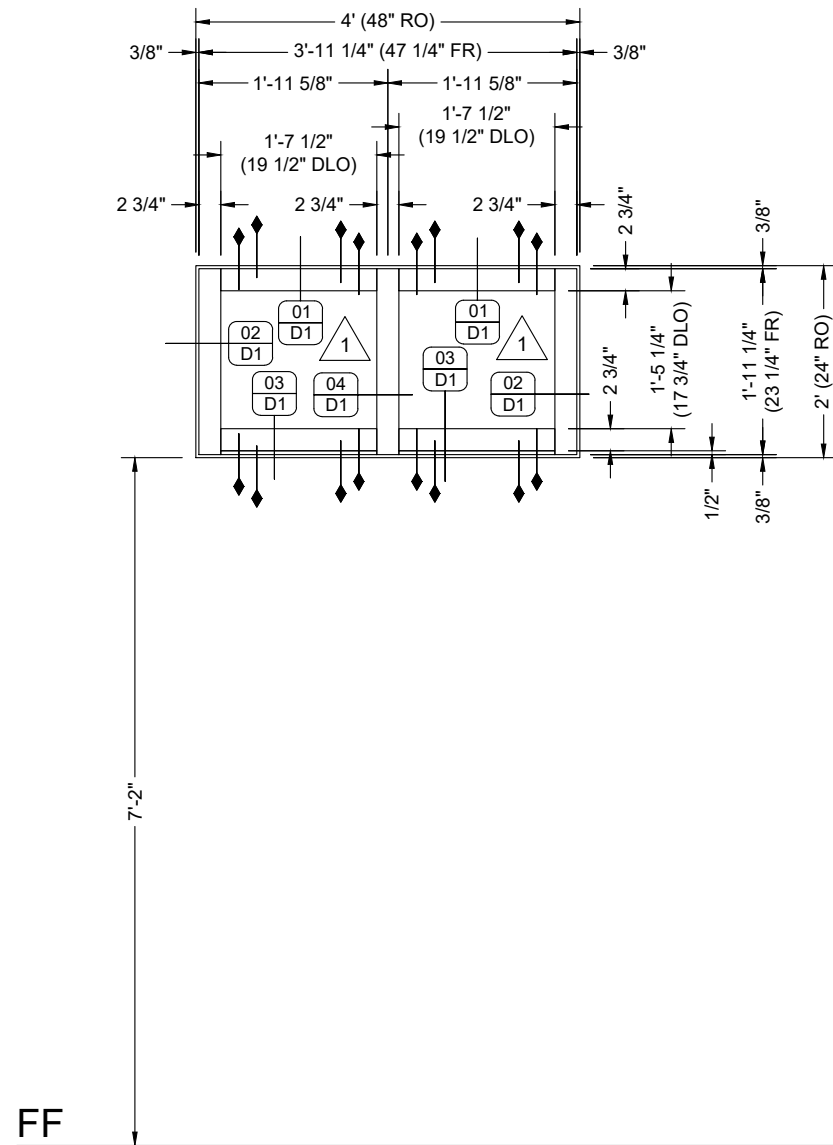
PROJECT NO. CGP-2101-01	
DRAWN BY fp	DATE 01/26/21
SCALE NTS	
DRAWING FLOOR PLANS	
SHEET P1	

NO.	DATE	DESCRIPTION
1	01/26/21	First Submittal

CONTRACTOR'S GLASS PRODUCTS
 7701 WEBER RD, CORPUS CHRISTI, TX 78315
 WORK (361) 854-8188 FAX (361) 854-4412

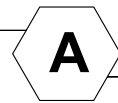
PROJECT: WOODSBORO FIRE STATION
RENOVATION
 ARCHITECT: LNV ENGINEERS, ARCHITECTS, SURVEYORS
 (261) 883-1884
 PROJECT: COSTA VERDE RESOURCES, LLC
 (361) 883-5800

PROJECT NO. CGP-2101-01	
DRAWN BY fp	DATE 01/26/21
SCALE 1/2" = 1'-0"	
DRAWING ELEVATIONS	
SHEET E1	



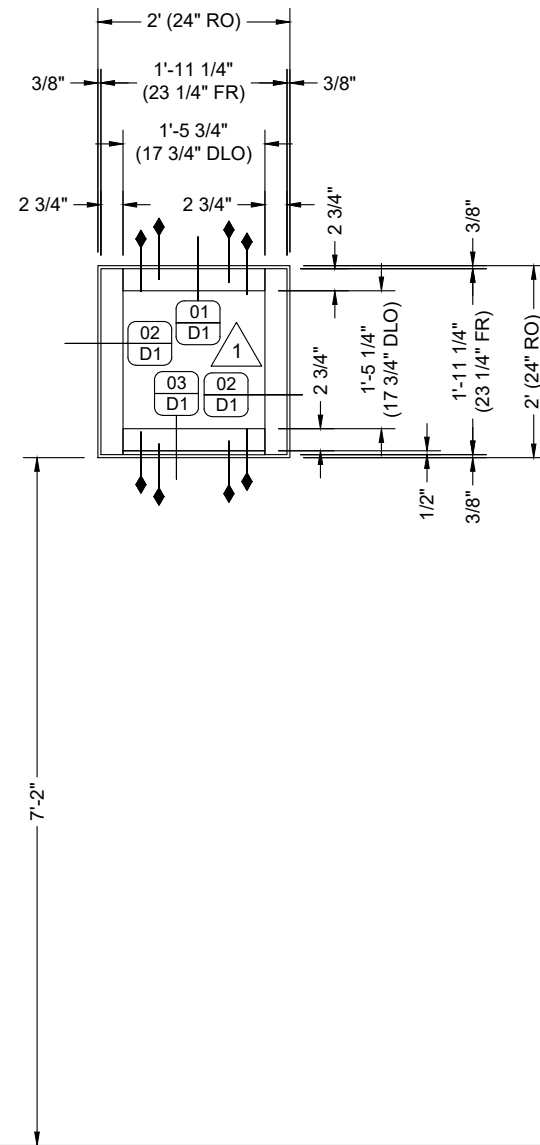
ELEVATION

QUANTITY: 02
 SCALE: 1/2" = 1'-0"
 ARCH REF: A/A1.5
 B/A3.1
 D/A3.1
 A/A4.1



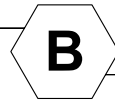
STOREFRONT

KAWNEER IR-501T THERMAL IMPACT
 ALUMINUM STOREFRONT



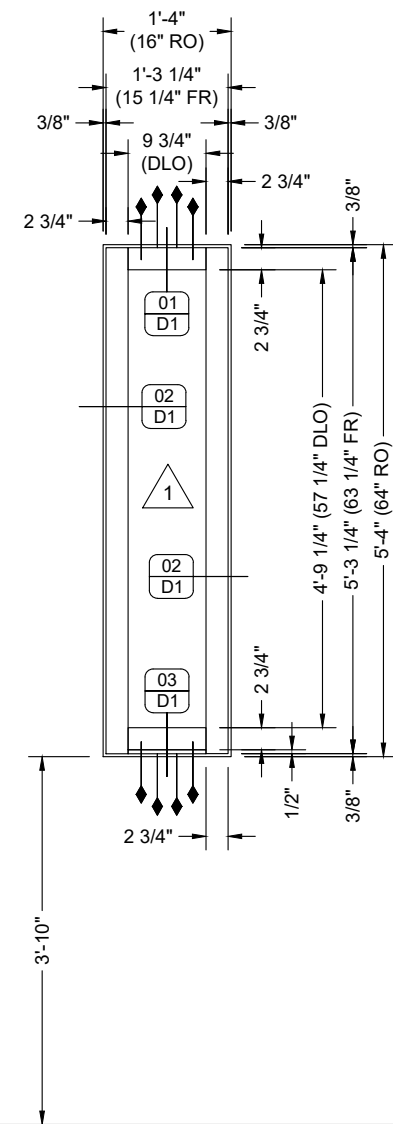
ELEVATION

QUANTITY: 07
 SCALE: 1/2" = 1'-0"
 ARCH REF: A/A1.5
 B/A1.5
 A/A3.1
 C/A3.1
 B/A4.1



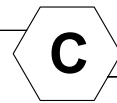
STOREFRONT

KAWNEER IR-501T THERMAL IMPACT
 ALUMINUM STOREFRONT



ELEVATION

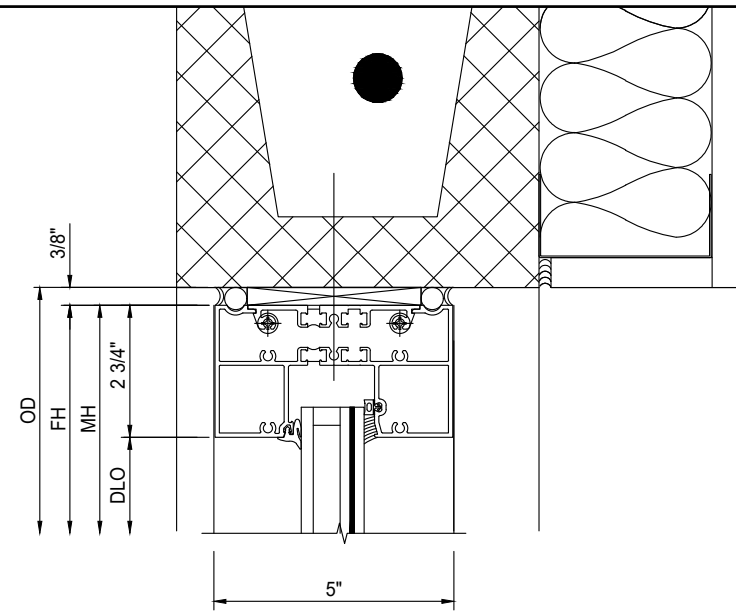
QUANTITY: 01
 SCALE: 1/2" = 1'-0"
 ARCH REF: A/A1.5
 C/A4.1



STOREFRONT

KAWNEER IR-501T THERMAL IMPACT
 ALUMINUM STOREFRONT

FF

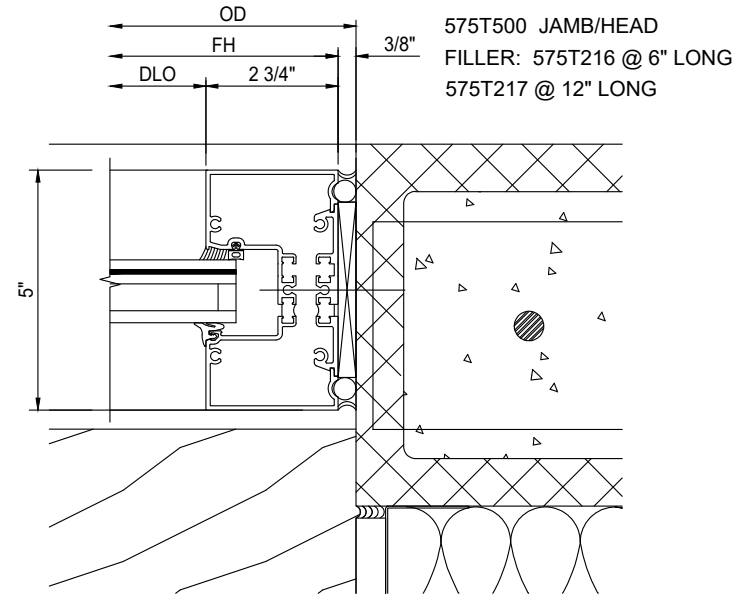


DETAIL

SCALE: 3" = 1'-0"
ARCH REF: 1/A3.5
TDI A1/5

01 WINDOW HEAD

GLASS WALL SYSTEM TYPE:
KAWNEER IR-501T THERMAL IMPACT ALUMINUM STOREFRONT

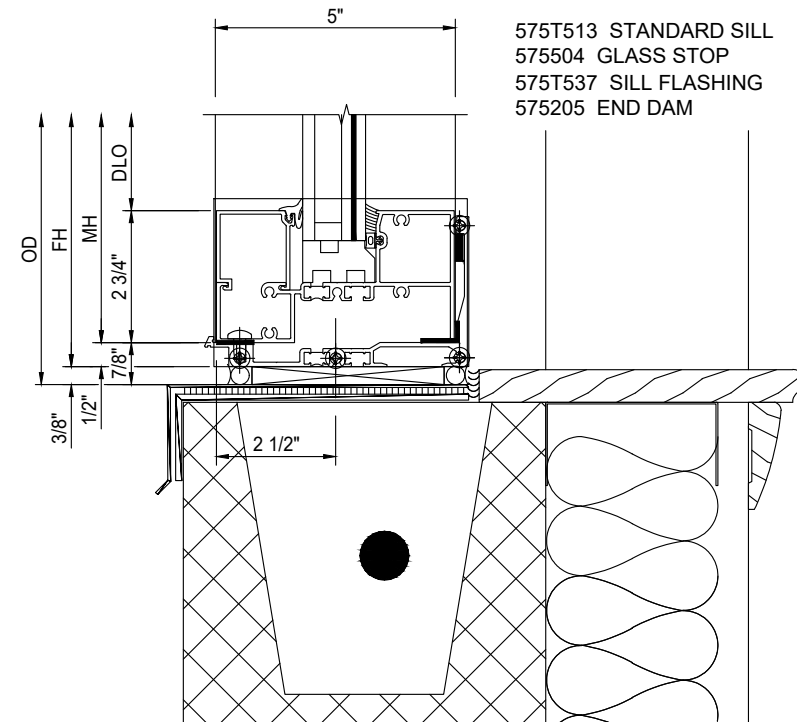


DETAIL

SCALE: 3" = 1'-0"
ARCH REF: 2/A3.5
TDI D1/5

02 WINDOW JAMB

GLASS WALL SYSTEM TYPE:
KAWNEER IR-501T THERMAL IMPACT ALUMINUM STOREFRONT



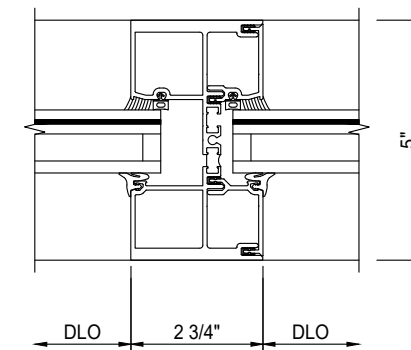
DETAIL

SCALE: 3" = 1'-0"
ARCH REF: 3/A3.5
TDI B/5

03 WINDOW SILL

GLASS WALL SYSTEM TYPE:
KAWNEER IR-501T THERMAL IMPACT ALUMINUM STOREFRONT

575T514 HW TUBE MULLION
127209 MATING GASKET
575531 MULLION INSERT INTERIOR HALF
575532 MULLION INSERT EXTERIOR HALF



DETAIL

SCALE: 3" = 1'-0"
ARCH REF: N/A
TDI E1/6

04 VERTICAL MULLION

GLASS WALL SYSTEM TYPE:
KAWNEER IR-501T THERMAL IMPACT ALUMINUM STOREFRONT

NO.	DATE	BY	DESCRIPTION
1	01/26/21	fp	First Submittal

CONTRACTOR'S GLASS PRODUCTS
7701 WEBER RD, CORPUS CHRISTI, TX 78315
WORK (361) 854-8188 FAX (361) 854-4412

PROJECT: WOODSBORO FIRE STATION
RENOVATION
ARCHITECT: LNV ENGINEERS, ARCHITECTS, SURVEYORS
(261) 868-1864
PROJECT: COSTA VERDE RESOURCES, LLC
(863) 883-5800

PROJECT NO.	CGP-2101-01
DRAWN BY	fp
DATE	01/26/21
SCALE	3" = 1'-0"
DRAWING	DETAILS
SHEET	D1

KAWNEER

ACCEPTABLE SUBSTRATE MATERIALS:

CONCRETE MIN.: 3000 PSI CONCRETE; C90 CONCRETE-FILLED CMU

METAL STUD: STOREFRONT - MIN. 16 GA. 33 KSI

STEEL: STOREFRONT - 1/8" THK A36 STEEL

WOOD MIN.: 2X WOOD FRAME OR BUCK (MIN. GR. 3 & G=0.55)

DISCLAIMER: THIS SHEET IS A REFERENCE SHEET ONLY, NOT A SUBSTITUTE FOR THE TDI PED NUMBER NOTED

PED NUMBERS(S) CONSIDERED FOR THIS SHEET:

#1758T, REV B, STOREFRONT

SHIM SPACE: MAX. SHIM SPACING IS 3/8".

KAWNEER STOREFRONT IR-501T FRAMING ANCHORS

TDI #1728T, REV B, PAGE 1 OF 10

F1. CONCRETE ANCHORS: CONCRETE SCREWS SHALL BE 1/4" SCREWS CONSISTING OF ULTRACONS (C.S.), ELCO CRETE-FLEX (S.S.) ITW RAMSET/RED HEAD TAPCONS (C.S. OR S.S.), OR HILTI KWIK-CON II (C.S. OR S.S.), WITH MINIMUM EMBEDMENT OF 1 3/4" AND A MINIMUM EDGE DISTANCE OF 2 1/2"

F2. CONCRETE FILLED BLOCK: CONCRETE SCREWS SHALL BE 1/4" SCREWS CONSISTING OF ULTRACONS (C.S.), ELCO CRETE-FLEX (S.S.) ITW RAMSET/RED HEAD TAPCONS (C.S. OR S.S.), OR HILTI KWIK-CON II (C.S. OR S.S.), WITH MINIMUM EMBEDMENT OF 1 3/4" AND A MINIMUM EDGE DISTANCE OF 2 1/2"

F3. METAL STUDS: SCREWS SHALL BE 1/4" SELF-TAP DRILL SCREWS, WITH A FULL EMBEDMENT AND A MINIMUM OF 1/2" EDGE DISTANCE

F4. METAL PLATES: SCREWS SHALL BE 1/4" SELF-TAP DRILL SCREWS, WITH A FULL EMBEDMENT AND A MINIMUM OF 1/2" EDGE DISTANCE

F4. WOOD ANCHORS: ANCHORS FOR WOOD SHALL BE A MINIMUM OF #14 SMS OR WOOD SCREWS SCREWS, WITH A MINIMUM EMBEDMENT OF 1 3/8" AND A MIN EDGE DISTANCE OF 1"

VERTICAL MULLION AT HEAD

TDI #1461T REV B, SHEET 3 OF 10

CONCRETE & METAL

HEAD

NUMBER OF ANCHORS ARE DETERMINED LENGTH OF SPAN AND ON THE IMPOSED WIND LOAD ON MEMBER

CONCRETE BLOCK AND METAL STUD

HEAD

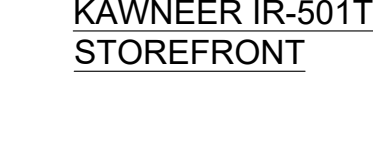
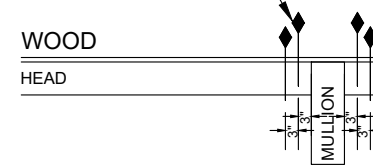
NUMBER OF ANCHORS ARE DETERMINED LENGTH OF SPAN AND ON THE IMPOSED WIND LOAD ON MEMBER

WOOD

HEAD

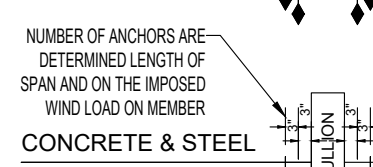
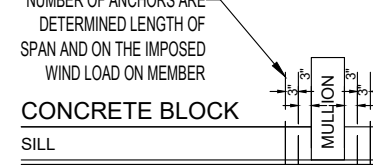
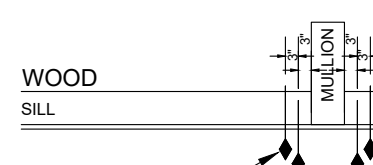
END JAMB AT HEAD

TDI #1461T REV B, SHEET 3 OF 10



JAMB ANCHOR REQUIREMENTS
 TDI #1758T, RV B, SHEET 2 OF 10
 ANCHORS ARE REQUIRED FOR JAMBS GREATER THAN 90".

KAWNEER IR-501T STOREFRONT



VERTICAL MULLION AT SILL

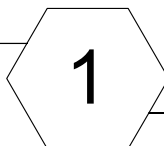
TDI #1461T REV B, SHEET 3 OF 10

END JAMB AT SILL

TDI #1461T REV B, SHEET 3 OF 10

ANCHORING

ANCHORS: THE NUMBER AND TYPES OF ANCHORS ARE DETERMINED BY THE TYPE OF SUBSTRATE (SEE THIS SHEET AND TDI PRODUCT EVALUATION DOCUMENTS)



KAWNEER STOREFRONT

GLASS FRAMING SYSTEM(S):
 KAWNEER IR 501 THERMAL ALUMINUM STOREFRONT - LARGE MISSILE IMPACT

NO.	DATE	BY	DESCRIPTION
1	01/26/21	fp	First Submittal

CONTRACTOR'S GLASS PRODUCTS
 7701 WEBER RD, CORPUS CHRISTI, TX 78315
 WORK (361) 854-8188 FAX (361) 854-4412

PROJECT: WOODSBORO FIRE STATION
RENOVATION
 ARCHITECT: LNV ENGINEERS, ARCHITECTS, SURVEYORS (261) 868-1884
 PROJECT: COSTA VERDE RESOURCES, LLC (861) 883-8600

PROJECT NO.	CGP-2101-01
DRAWN BY	fp
DATE	01/26/21
SCALE	NTS
DRAWING	ANCHORING
SHEET	A1